

Hotel Riu Plaza The Gresham Dublin

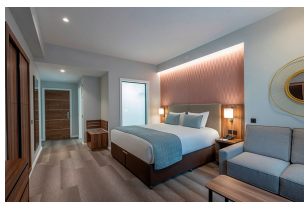
Ireland - Dublin

23, Upper O'Connell Street - D01 C3W7

Dublin Ireland

Phone. + 353-1-874 6881/Toddy's Restaurant +353-1-817-6099

E-mail: hotel.plazathegreshamdublin@riu.com



Highlights

- Conference and meeting rooms
- Free WiFi throughout hotel
- Room service

Location/General information

- Located in O'Connell Street, the heart of the city centre of Dublin
- Close to places of interest like Trinity College, Temple Bar area, theatres and shopping areas
- Historical building with 6 floors
- 11 km from Dublin International Airport (DUB)
- Bus stop right outside the hotel
- 1 km from the train station (Connolly Station)
- Hotel parking (additional charge)
- Credit cards accepted: MasterCard, Amex, Visa

The Hotel offers

- Room service
- "Gallery" restaurant for breakfast
- "Toddy's" restaurant, bar and brasserie
- "Writer's Lounge" bar
- Free gym (access 24 hrs)
- Use of computers with Internet access and printer (free of charge)
- Free WiFi throughout hotel

Meetings/Events

9 conference and meeting rooms

Audiovisual equipment to rent

Free WiFi in all conference & meeting rooms

Rooms

404 guest rooms

All guest rooms have:

Room service

Central air conditioning/heating

Telephone

Free wireless Internet

Bathrooms with shower

Bathroom toiletries

Hairdryer

Special make-up mirror

110/220 V

Mini-fridge

Kettle for coffee and tea (complimentary coffee, tea)

Flat screen satellite TV

Electronic in-room safe

Iron and ironing board

Deluxe Standard Twin rooms:

From 18 m²

2 twin beds 120 x 200 cm

Deluxe Standard King rooms:

From 18 m²

1 king-size bed 180 x 200 cm

Deluxe Standard Queen rooms:

From 14 m²

1 queen-size bed 150 x 200 cm

Some with carpeted floor

Adapted Deluxe Standard rooms:

From 15 m²

1 queen-size bed 150 x 200 cm or 2 twin beds 120 x 200 cm

Step-free shower and wheelchair-accessible washbasin, among other facilities

Deluxe Family King rooms:

33 m²

1 king-size bed 180 x 200 cm and 1 sofa bed

Deluxe Superior Twin rooms:

From 33 m²

2 twin beds 120 x 200 cm

Deluxe Superior King rooms:

From 23 m²

1 king-size bed 180 x 200 cm

Some with carpeted floor

Deluxe Family Twin rooms:

33 m²

2 twin beds 120 x 200 cm and 1 sofa bed

Junior Suites:

From 43 m²

1 king-size bed 180 x 200 cm

Separate lounge with sofa

Bathrobe

Some with carpeted floor

Gastronomy

Bed and breakfast

Breakfast:

"Gallery" restaurant

Varied breakfast buffet from 6.45 a.m. to 10.30 a.m.

On Saturdays, Sundays and Bank Holidays from 7.00 a.m. to 11.00 a.m.

Vegetarian and gluten-free options

Lunch, dinner, snacks (additional charge):

"Toddy's" restaurant, bar and brasserie

"Writer's Lounge" bar

Room service (additional charge)

Sports/Entertainment

Sports:

Free gym (access 24 hrs)