



## Hotel Riu Palace Tenerife

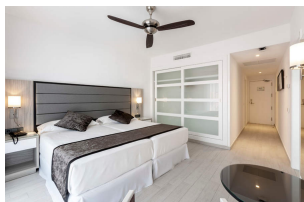
Spain - Tenerife - (Canary Island)

Urbanización La Herradura - 38670

Adeje Tenerife

Phone. (+34) 922 714 191

E-mail: [palace.tenerife@riu.com](mailto:palace.tenerife@riu.com)



### Highlights

- Main and theme restaurants
- Infinity pool, 2 swimming pools, children's pool
- Wellness Centre
- Free gym and steam bath
- "Riu Party" theme parties, at Riu Buenavista

### Location/General information

- Located on Costa de Adeje
- 9 storey building
- Right on the beach
- 21,000 m<sup>2</sup> garden
- 1.5 km from shops
- 22 km from airport
- 150 m from bus stop
- Credit cards accepted: MasterCard, Visa, Diners and Amex

### The Hotel offers

- Main restaurant with terrace
- "Krystal" Fusion restaurant
- Poolside restaurant/ Spanish restaurant
- Lobby bar
- Lounge bar with terrace
- Poolside bar
- "Sunshine" poolside bar
- Two swimming pools, 228/332 m<sup>2</sup>, heated in winter
- Infinity swimming pool (exclusive to adults), 140 m<sup>2</sup>, heated in winter

Heated indoor swimming pool (exclusive to adults), 39 m<sup>2</sup>  
Children's swimming pool, 17 m<sup>2</sup>  
Children's playground  
Free sun loungers, towels and parasols by pool  
Balinese style beds (for guests staying in the junior suites)  
Sun terrace  
Sand terrace-solarium  
Chill-out area  
"Body Love" Wellness Centre with a variety of treatments and massages  
(additional charge)  
Free gym and steam bath

Use of steam bath is restricted to guests over 18 years old.

Use of the gym is restricted to guests over 16 years old. Sports shoes are compulsory when using the gym.

Free WiFi throughout hotel

No pets allowed.

## Rooms

334 guest rooms

All the guest rooms have:

Bathroom with shower  
Hairdryer  
Bathrobe  
Special make-up mirror  
Telephone  
USB power outlet  
Free WiFi  
Central air conditioning  
Ceiling fan  
Minibar  
Satellite TV  
In-room safe (additional charge)  
Iron and ironing board  
Balcony or terrace

Single room with:

1 bed 110 x 200 cm

Double room with:

Bathroom with shower, bidet and double washbasin  
2 beds 110 x 200 cm or 1 bed 180 x 200 cm  
Sitting area with sofa or sofa bed  
Rooms with sea view can be booked

Family room sea view with:

Bathroom with shower, bidet, double washbasin  
2 bedrooms  
2 beds (110 x 200 cm)  
1 bed (180 x 200 cm) and sofa  
Sea view

Family room with:

2 bathrooms with shower, one of them with bidet and double washbasin  
1 bedroom with 1 bed (110 x 200 cm)  
1 bedroom with 2 beds (110 x 200 cm) or 1 bed (180 x 200 cm) and sofa

Junior suite with:

Minimum age in this room type 18 years  
Bathroom with hydromassage bathtub and separate shower, bidet and double washbasin  
2 beds 110 x 200 cm or 1 bed 180 x 200 cm  
Integrated lounge with sofa  
Sea view

Within the hotel gardens: Balinese bed for each junior suite situated on the front line next to the sea

## **Gastronomy**

Half board (breakfast and dinner)

Breakfast:

Varied buffet, live cooking station and Cava

Dinner:

Hot and cold buffet starters

Main course buffet and live cooking stations. Vegetarian options available.

Dessert buffet

Special evenings, twice a week

Optional dining (supplement charge not applicable; advance reservation required):

"Krystal" Fusion restaurant

Spanish restaurant

Gentlemen are recommended to wear long trousers for dinner.

Lunch (additional charge):

Dishes à la carte

Tapas service at pool

## **Sports/Entertainment**

Sports

Free in hotel:

Gym and steam bath

Other sports and facilities nearby (additional charge):

Various water sports available (Playa de Fañabé)

Minigolf and squash

Golf courses

Entertainment

Live music or shows (several times a week)

At Riu Buenavista (transport included):

"Riu Party", theme parties, once a week