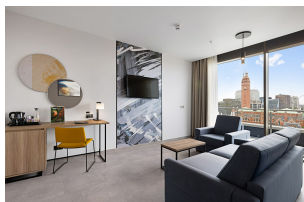




Hotel Riu Plaza London Victoria

United Kingdom - London

1 Neathouse Place - SW1V 1LH
 London Reino Unido
 Phone. 00 34 871 966296
 E-mail: sales.london@riu.com



Highlights

24 km / 15 miles from London-Heathrow airport (LHR)
 44 km / 27 miles from London-Gatwick airport (LGW), a 30-minute train ride (Gatwick Express)
 Free WiFi throughout hotel
 Breakfast buffet

Location/General information

Opened in July 2023
 Located in the heart of London
 Short distance to Victoria Station, Westminster Cathedral, Buckingham Palace and other places of interest
 24 km / 15 miles from London-Heathrow airport (LHR)
 44 km / 27 miles from London-Gatwick airport (LGW), a 30 minutes train ride (Gatwick Express)
 150 m / 0.09 miles from Victoria Station
 11-storey building
 Parking at a charge (exclusively to less-mobile, limited spaces, non-reservable)
 Credit cards accepted: MasterCard, Amex, Visa, Diners

The Hotel offers

Restaurant
 Lobby bar
 External room service, additional charge

Free WiFi throughout hotel

Fully-equipped gym (access 24 hrs)

Rooms

435 guest rooms

All guest rooms have:

Desk

Mini-fridge

Central air conditioning/heating

Telephone

Free WiFi

Bathroom with shower

Bathroom toiletries

Hairdryer

Special make-up mirror

USB power outlet

230 V

Electric kettle, complimentary coffee and tea service kit

Flat screen satellite TV with multimedia connections

Electronic in-room safe

Iron and ironing board

Deluxe King room:

From 22 m²

1 king-size bed 180x200 cm

Deluxe King room with Views:

From 22 m²

1 king-size bed 180x200 cm

Rooms are located on the upper floors with views of the city

Deluxe Twin room:

From 22 m²

2 beds 110 x 200 cm

Deluxe Queen room:

From 18 m²

1 queen-size bed 150 x 200 cm

Some with sofa bed

Adapted Deluxe King room:

From 29 m²

1 king-size bed 180x200 cm

Step-free shower and wheelchair-accessible washbasin, among other facilities

Adapted Deluxe Twin room:

From 38 m²

2 beds 110 x 200 cm

Step-free shower and wheelchair-accessible washbasin, among other facilities

Deluxe Full Bed room:

15 m²

1 bed 135 x 200 cm

Deluxe without window:

From 18 m²

Deluxe Family without window:

From 30 m²

Integrated lounge area with sofa bed

Deluxe Family Quadruple room:

From 30 m²

1 king-size bed 180x200 cm or 2 beds 110 x 200 cm

Integrated lounge area with sofa bed

Deluxe Family Triple room:

From 25 m²

1 king-size bed 180x200 cm or 2 beds 110 x 200 cm

Integrated lounge area with sofa bed

Family Junior Suite King:

From 35 m²

1 king-size bed 180x200 cm

Integrated lounge area with sofa bed

Presidential Suite

65 m²

Bathroom with bathtub, shower cabin and double washbasin

Bathrobe

1 king-size bed 180x200 cm

Separate lounge with sofa bed and dining table

City views

Gastronomy

Bed and breakfast

Breakfast:

At the restaurant

Varied buffet from 7:00 a.m. to 10:30 a.m.

On Saturdays, Sundays and Bank Holidays from 7.00 a.m. to 11.00 a.m.

Vegetarian and gluten-free options

Dinner:

At the restaurant "Tastes"

À la carte from 5.30 p.m. to 9.30 p.m., additional charge

External room service, additional charge

Sports/Entertainment

Sports:

Fully-equipped gym, free of charge (access 24 hrs)